

KIN successfully installed the Premise and Outside Plant Backbone and horizontal structured cabling systems for the new EBRD Building.

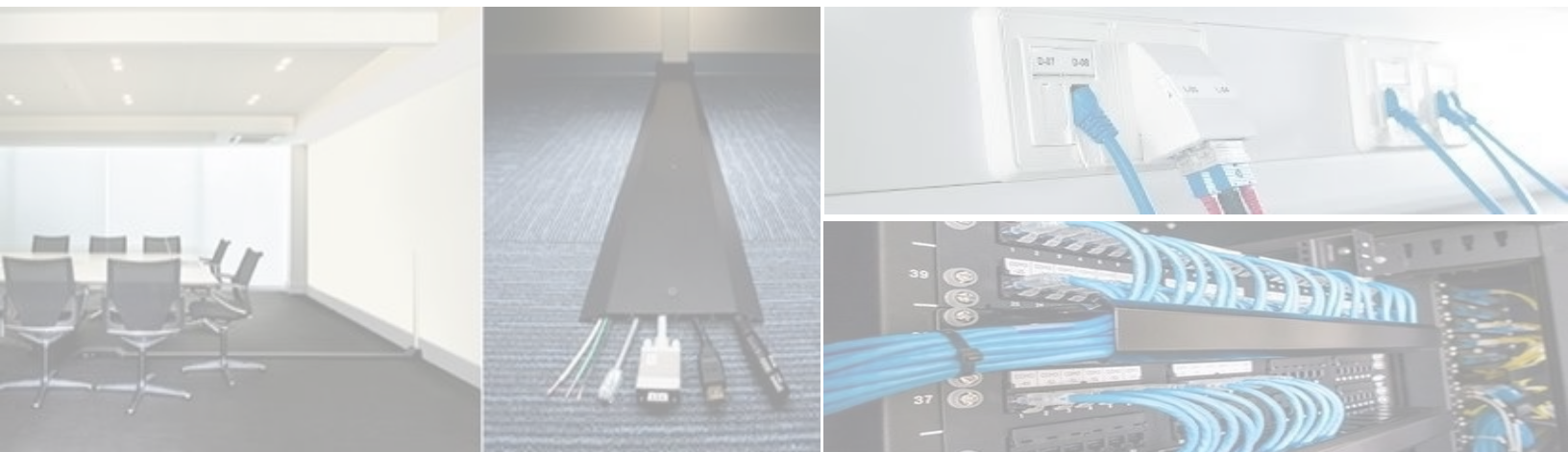
### **Prestigious Bank for Communications Experts**



**The European Bank for Reconstruction and Development (EBRD) is an international institution whose members comprise 60 countries, the European Community and the European Investment Bank.**

## **THE CHALLENGE**

**In order to deliver effective communications systems for its employers, EBRD required a reliable, high performance network infrastructure for its own premises. So when planning its new renovated offices, this was a key consideration. Working with consultants and architects, EBRD determined that the structure cabling solution, supplied exclusively by KIN, would best fit the exacting requirements of its business.**



## **THE SOLUTION**

**KIN installed all voice and data systems in a twelve-story office building that was to house the new renovated EBRD Offices. This meant installing passive and active equipment, switches, and routers for the main data center and telecommunications rooms. The work included the installation of copper horizontal system, a copper and Fiber Backbone system, and demolition of existing cabling. The design represented a traditional structured cabling system that included a 25 year manufacturer's performance warranty.**

**“The professionalism of the installers and the knowledge that the project managers had of the advanced networking systems was extremely impressive. KIN worked so well with all of the other contractors on site and through-out the project. I would highly recommend them for any data cabling or networking services you may need for your business” - Nicholas Sheridan, IT Networks, London**